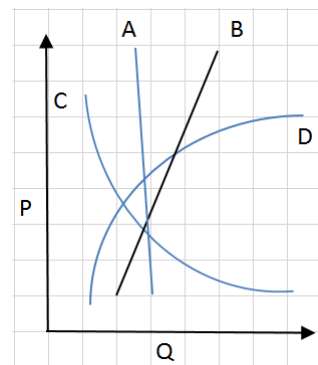


This book has permission to use the "N&K method of COLORS".

5) Question: In the graph shown below, which line on the graph shows that as the rate of change of P decreases, the rate of change of Q increases? Also, as P decreases Q increases.

- A) A
  - B) B
  - C) C
  - D) D
- nw,nc.



For speed, while solving something similar, only THINK the words in blue; WRITE only the words in other COLORS.

Given: 1) The graph with four lines.

Solve: Which line on the graph shows that as the rate of change of P decreases, the rate of change of Q increases?

Road Map of Solution:

Line A: The rate of change of P does NOT change. The rate of change of Q does NOT change.

Line B: The rate of change of P does NOT change. The rate of change of Q does NOT change.

Line C: As the rate of change of P decreases, the rate of change of Q increases. Also, as P decreases Q increases.

Line D: As the rate of change of P decreases, the rate of change of Q increases. Also, as P decreases Q decreases.

Only Line C fits the required criteria. Answer (C)