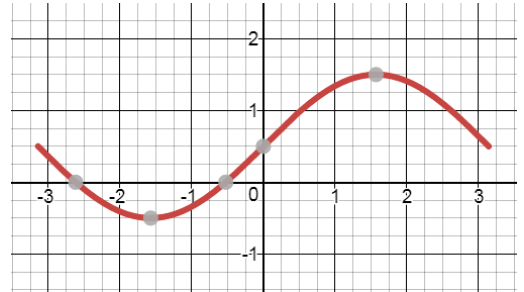


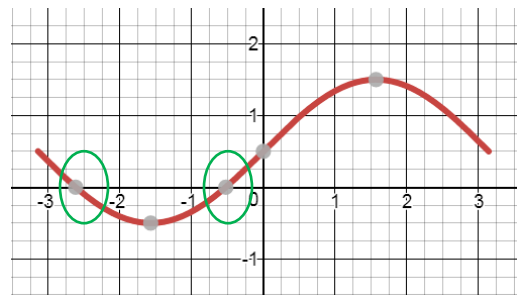
This book has permission to use the "N&K method of COLORS".

17) **Question:** For the graph shown below, what the values of  $x$  for  $y=0$  ?

- A) 0.50 and 1.50
  - B) -0.52 and -2.62
  - C) -0.50 and 1.50
  - D) 0.00 and -1.57
- nc



**For speed,** while solving something similar, only **THINK** the words in blue; **WRITE** only the words in other **COLORS**.



**Given:** 1) The graph.

**Solve:** What the values of  $x$  for  $y=0$  ?

**Road Map of Solution:**

**First Step:** Circle the points (in green) where the graph intersects the  $x$ -axis ( $y=0$ ).

**Second Step:** Write down their  $x$  coordinates.

Approximately -0.5 and -2.6

Answer (B)